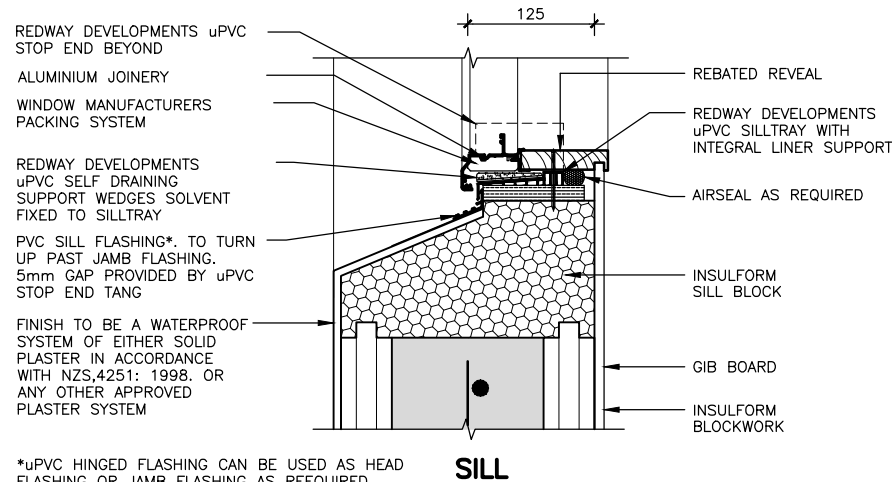
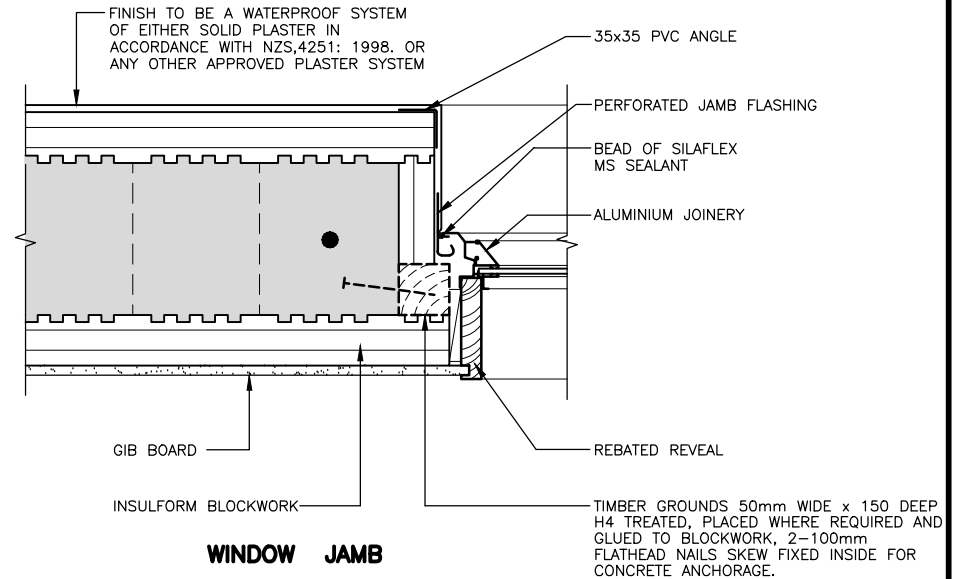
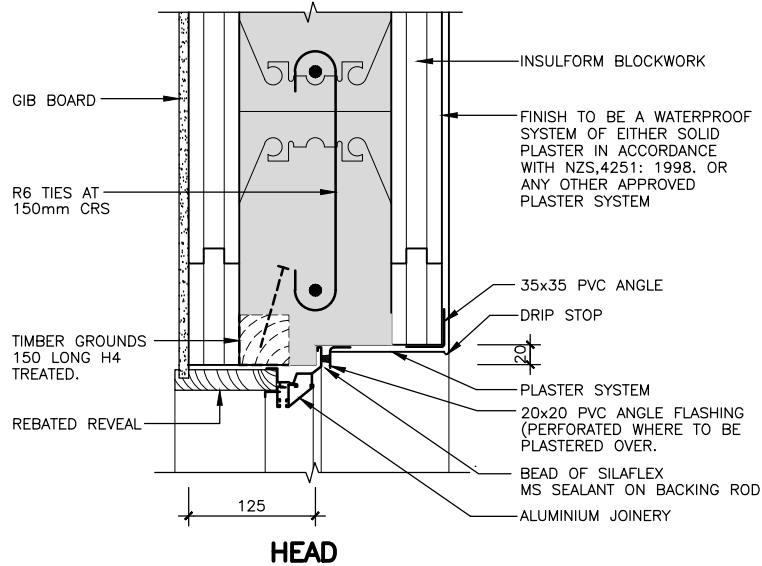


THESE DETAILS APPLY TO NON-SPECIFIC DESIGNS



\*uPVC HINGED FLASHING CAN BE USED AS HEAD FLASHING OR JAMB FLASHING AS REEQUIRED

NOTE: REINFORCEMENT SHOWN IS THE MINIMUM THAT COULD BE REQUIRED. ADDITIONAL STEEL WILL USUALLY BE REQUIRED. THE FINAL STRUCTURAL DESIGN MUST BE CHECKED BY A REGISTERED ENGINEER. TIMBER GROUNDS ARE TO BE TREATED H4, 150mm LONG AND PLACED WHERE REQUIRED, TWO NAILS PER GROUND. THE MANUFACTURER OF THE WINDOWS SHALL DESIGN AND MANUFACTURE WINDOWS AND FLASHINGS TO MEET THE BUILDING DESIGN WIND SPEED AND SHALL PROVIDE INSTALLATION INSTRUCTIONS TO ENSURE THAT NO WIND OR WATER LEAKAGE OCCURS.

G	14/4/09	SILL DETAIL AMENDED, NEW THERMOPLASTIC BRIDGE	W.L	CGF			
F	28-1-00	CHANGES AS PER BRANZ RECOMMENDATIONS	W.L	WWR			
E	19/5/99	FLASHING ALTERATIONS	W.L	WWR			
	DATE	DESCRIPTION	ENG	DRN	EN.CK	DN.CK	APP.

© 2009 FILE:[PG50\_4a\_revG] 14-APRIL-2009 >VERSION 6<

**INSULFORM NZ**  
CHRISTCHURCH, NZ.  
E.P.S. THERMOPLASTIC BRIDGE BLOCK  
CONTINUOUS REINFORCED CONCRETE  
WALL SYSTEMS. PAT.NO.247577

Phone: 384 3804  
Fax: 384 0009

**STRUCTURAL ENGINEERS**  
YY LEWIS & BARROW LTD  
PH 366 4320 CHRISTCHURCH

**ALUMINIUM JOINERY DETAILS,  
WINDOWS**

ENG	W.L.	FILE	DRAWING
DRN	B.T	6157 4a	©
CHK	W.L.		
DATE	5/94		